

ri-scope[®] LED

green efficiency



CONTENT

PRODUCT CHARACTERISTICS	03-05
ri-scope® OTOSCOPES	06
ACCESSORIES	07-09
ri-scope® OPHTHALMOSCOPIES	10-11
RETINOSCOPIES	12
DERMATOSCOPIES	13
E.N.T. INSTRUMENTS	14-17
POWER SOURCES HANDLES	18-19
ri-former® WALL DIAGNOSTIC STATION	20
ri-former® EXTENSION MODULES	21-22
ri-scope® SETS	23-28

ri-scope® LED PREMIUM HAND HELD LED DIAGNOSTIC INSTRUMENTS.

Consistent light output of white and bright LED over service life of battery for more efficient diagnosis. The new LED / Li-ion technology resulting in more reliable instruments due to significantly longer service life of batteries and LEDs.

green efficiency

- More efficient diagnosis by natural LED.
- Low maintenance cost thanks to long LED and battery service lives.

LED illumination – bright, white light with a nearly unlimited lifetime!

- Available for all **ri-scope® L** instruments and dermatoscopes, except retinoscopes.
- White high performance LED 5.500K / 17.500 Lux.
- Lifetime → 20,000 hours compared to 20-30 hours of halogen / xenon lamps.

Lithium-Ion batteries – light-weight and durable .

- 50 hours operational lifecycle of LED with fully charged Li-Ion battery.
- Rechargeable battery lifetime: up to 1200 charging cycles.

rheotronic® – electronic light intensity adjustment for LEDs and light bulbs

- 100% light output after short switch activation.
- Continuously variable light adjustment.
- Automatic safety shut-down after 120 seconds.

Renowned high performance optics

Otoscopies

- Glass optics with high depth of focus and precise 3-times magnification up to the image margin.
- Reflection minimized, consistent illumination.
- Fiberoptics provide highest light efficiency.

Ophthalmoscopes

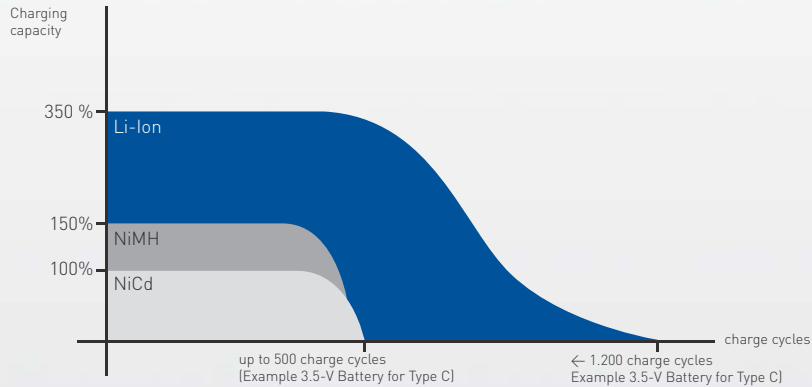
- Dust-proof.
- Aspherical condenser lens.
- Coaxial observational and illuminational light beams .
- Reflection-reduced view even with small pupils.

ri-scope® LED LIGHT AND PERFORMANCE LIKE NEVER BEFORE



Lithium-ion battery – The power plus.

Memory effect and self-discharge are no match: the lightweight lithium-ion battery used in the **ri-scope® L** has an unsurpassed lifetime – with higher loading capacity and sustained high-power performance, even after well over 1000 charge cycles.



LED technology – performance for life.

Nearly unlimited lifetime with the highest luminosity: these advantages make the LED technology used with the **ri-scope® L** so unique. Moreover, the lamp inside the **ri-scope® L** never gets hot, provides true-colour and even illumination of the area under examination and is practically guaranteed never to fail, in contrast to conventional halogen or xenon lamps.

rheotronic®

rheotronic® makes examinations easier than flipping a switch! Riester handles with the patented **rheotronic®** function switch on automatically to the touch and shut off after 120 seconds by themselves when put away. The light intensity can be adjusted with the **rheotronic®**.



Reflection-reduced, cost-effective direct illumination with 2.5V or 3.5V XL xenon lamps.



Fiber optics with 2.5V/3.5V XL xenon or 3.5V LED illumination ensure an unhindered, glare-free view.



The light intensity can be adjusted with the **rheotronic®**.

CENTREPIECES OF THE ri-scope® PIONEERING ADVANTAGES

LED illumination

For uniform illumination of the examination field with pure white light (5500 K). The LED illumination shows colours as they really are. Helpful for efficient diagnostics plus an almost unlimited service life.

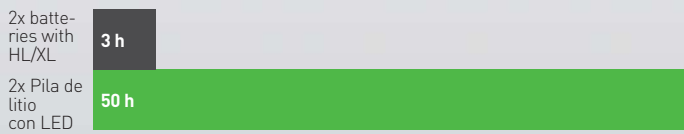


green efficiency

- Low maintenance costs thanks to long LED and battery service lives. Whilst the service life of a xenon light source is only approx. 20 hours, LED burns for at least 20,000 hours, i.e. over 2 years at a go.

Its optimum values in all these fields make the **ri-scope®** a pioneering hand-held instrument for flexible diagnosis.

Battery service lives



Bulb service lives



ri-scope® L OTOSCOPES

PREMIUM OTOSCOPES WITH GLASS OPTICS AND LED / LI-ION TECHNOLOGY

ri-scope® L1

The inexpensive basic model with reduced-reflection, direct illumination (without specula ejection device)

without anti-theft device
XL 2,5 V **No. 10562**
XL 3,5 V **No. 10563**

with anti-theft device
XL 3,5 V **No. 10563-301**

- Direct illumination with 2.5-V xenon, or 3.5-V xenon lamp.
- Bi-directional swivelling optical glass with 3-fold magnification, optional available with operation lens with 4-fold magnification.
- Metal fitting for **e-scope®** / **ri-mini®** / **pen-scope®** specula, compatible with specula by other well-known manufacturers.
- Suitable for pneumatic tests (supplied without ball).
- Large selection of power sources: handy and stable handles, practical chargers and well-conceived diagnostic stations.

ri-scope® L2

The inexpensive F.O. model with 2.5-V/3,5V xenon or 3.5-V LED lights (without specula ejection device).

without anti-theft device
XL 2,5 V **No. 10564**
XL 3,5 V **No. 10580**
LED 3,5 V **No. 10565**

with anti-theft device
XL 3,5 V **No. 10580-301**
LED 3,5 V **No. 10565-301**

- Fiberoptics for optimal beaming and transmission of the light.
- Bi-directional swivelling, sealing optical glass with 3-fold magnification.
- Optional operation lens with 4-fold magnification available.
- Metal fitting for **e-scope®** / **ri-mini®** / **pen-scope®** specula, compatible with specula by other well-known manufacturers.
- Suitable for pneumatic tests (supplied without ball)
- Large selection of power sources: handy and stable handles, practical chargers and well-conceived diagnostic stations

ri-scope® L3

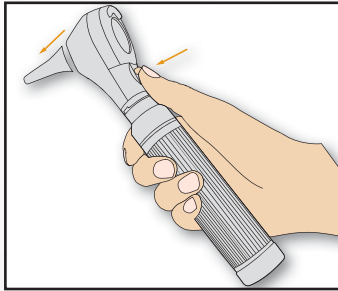
The high-end F.O. version with 2,5V/3,5V Xenon or 3,5V LED illumination, specula ejection device and operation lens.

without anti-theft device
XL 2,5 V **No. 10566**
XL 3,5 V **No. 10581**
LED 3,5 V **No. 10567**

with anti-theft device
XL 3,5 V **No. 10581-301**
LED 3,5 V **No. 10567-301**

- Fiberoptics for optimal beaming and transmission of the light.
- Bi-directional swivelling optical glass with 3-fold magnification.
- Operation lens with 4-fold magnification and glass mini optic ease the insertion of instruments .
- Easy-to-operate **SpecEjec®** specula ejection device.
- Fitting for **ri-scope®** specula and enlarged conduit for instruments.
- Suitable for pneumatic tests (supplied without ball).
- Large selection of power sources: handy and stable handles, practical chargers and well-conceived diagnostic stations.

ri-scope® L
OTOSCOPE



The SpecEjec® device enables touchless ejection of used ear specula for hygienic and simplified handling.



SIMPLE HANDLING SPECULAS FOR ri-scope®

Reusable specula for L1/L2

- Selection of different sizes: 2 mm, 2,5 mm, 3 mm, 4 mm und 5 mm.
- Made of black plastic.
- Each speculum is labelled by size.
- Sterilization at 134° C for 10 minutes in steam sterilizer or disinfection by conventional means possible.
- Delivered in a poly bag.

2,0 mm/10 items
No. 10775

2,5 mm/10 items
No. 10779

3 mm/10 items
No. 10783

4 mm/10 items
No. 10789

5 mm/10 items
No. 10795



ri-scope® L

ACCESSORIES



Disposable specula for L1/L2

- For single use.
- An especially hygienic option for the prevention of cross-contamination.
- Made of black plastic.
- Delivered in a poly bag.

2 mm

No. 10772-532 100 items
No. 10773-532 500 items
No. 10774-532 1000 items

2,5 mm

No. 10772-531 100 items
No. 10773-531 500 items
No. 10774-531 1000 items

3 mm

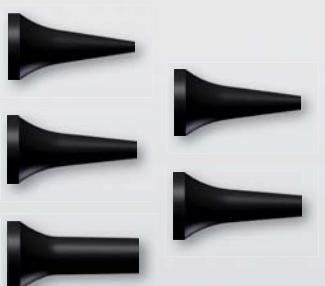
No. 10772-533 100 items
No. 10773-533 500 items
No. 10774-533 1000 items

4 mm

No. 10772-534 100 items
No. 10773-534 500 items
No. 10774-534 1000 items

5 mm

No. 10772-535 100 items
No. 10773-535 500 items
No. 10774-535 1000 items



Reusable specula for L3

- Specially developed for use with the SpecEjec® option, absolutely reliable handling.
- The 9-mm speculum is suitable for use as a nasal speculum.
- Selection of different sizes: 2 mm, 3 mm, 4 mm, 5 mm und 9 mm.
- Delivered in a poly bag.
- Each speculum is labelled by size.
- For repeat use.
- Sterilization at 134° C for 10 minutes in steam sterilizer or disinfection by conventional means possible.
- Made of black plastic.

2 mm/10items

No. 10800-532

3 mm/10items

No. 10800-533

4 mm/10items

No. 10800-534

5 mm/10items

No. 10800-535

9 mm/10items

No. 10800-539

ri-scope® L

ACCESSORIES



Disposable specula for L3

- For single use.
- An especially hygienic option for the prevention of cross-contamination.
- Made of black plastic.
- Delivered in a poly bag.

2 mm

No. 10801-532 100 items
No. 10802-532 500 items
No. 10803-532 1000 items

3 mm

No. 10801-533 100 items
No. 10802-533 500 items
No. 10803-533 1000 items

4 mm

No. 10801-534 100 items
No. 10802-534 500 items
No. 10803-534 1000 items

5 mm

No. 10801-535 100 items
No. 10802-535 500 items
No. 10803-535 1000 items

9 mm

No. 10801-539 100 items
No. 10802-539 500 items
No. 10803-539 1000 items

No. 11449

Operation lens

For **ri-scope® L** otoscope

- Optical Glass and small inner diameter for insertion of instruments.
- 4-fold magnification.
- with pin connector

No. 10960



Ball for the pneumatic test

For all **Riester** otoscopes.

- for the diagnosis of disorders of the middle ear.
- The ear drum can be examined optimally for by producing pressure.
- no connector included because side-release buckle is integrated into otoscope.

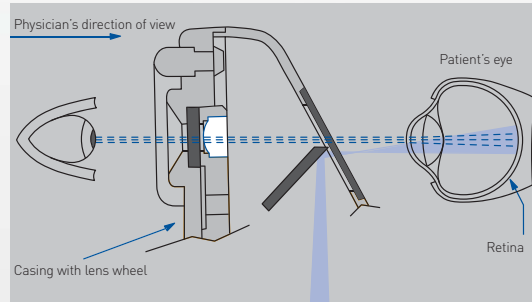
ri-scope® L
ACCESSORIES



ri-scope® L OPHTHALMOSCOPES PRODUCT RANGE

Optical path

Corneal and iris reflexes are avoided by separation of the parallel observation and illumination beams (Gull strand's principle). The illuminated retinal area is fully visible – even with narrow pupils. Optimum conditions are achieved for ophthalmological examinations.



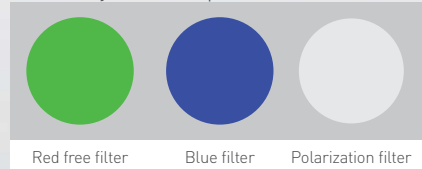
Dioptre disc

Corrective lenses L1/L2

D+ 1 | 2 | 3 | 4 | 5 | 6 | 7 | 8 | 9 | 10 | 12 | 15 | 20 | 40
D- 1 | 2 | 3 | 4 | 5 | 6 | 7 | 8 | 9 | 10 | 15 | 20 | 25 | 30 | 35

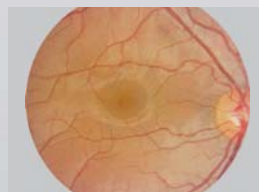
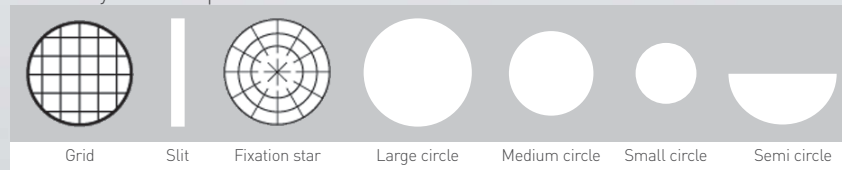
Filters

With easy-to-use aperture wheel

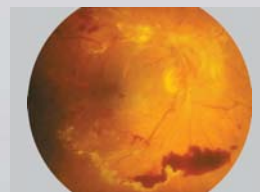


Apertures

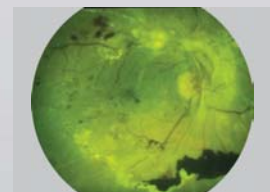
With easy-to-use aperture wheel



Healthy fundus



Pathological fundus



Fundus with red free filter

ri-scope® L
OPHTHALMOSCOPES

ri-scope® L OPHTHALMOSCOPES

Premium-Class Direct Ophthalmoscope with renowned high-performance optics and LED / Li-Ion technology.

ri-scope® L1

The inexpensive basic model with all the important basic functions.

without anti-theft device
XL 2,5 V **No. 10568**
XL 3,5 V **No. 10569**
LED 3,5 V **No. 10569-203**

- Dioptre wheel with 29 corrective lenses Plus 1-10, 12, 15, 20, 40
Minus 1-10, 15, 20, 25, 30, 35
- Easy-to-operate aperture hand-wheel with semi-circle, Small/medium/large circle fixation star, slit and red-free filter with contrast-enhancing effect.
- Includes filter wheel engageable for all apertures with symbol display, red-free filter.
- Optimized high-performance optics with aspherical condenser lens.
- Parallel beam path.
- Dust-proof.
- Large selection of power sources: handy and stable handles, practical chargers and well-conceived diagnostic stations.

with anti-theft device
XL 3,5 V **No. 10569-301**
LED 3,5 V **No. 10594-301**

ri-scope® L2

The enhanced basic model with separately engageable red-free, blue and polarization filters for each aperture.

without anti-theft device
XL 2,5 V **No. 10570**
XL 3,5 V **No. 10571**
LED 3,5 V **No. 10571-203**

- Dioptre wheel with 29 corrective lenses Plus 1-10, 12, 15, 20, 40
Minus 1-10, 15, 20, 25, 30, 35
- Easy-to-operate aperture hand-wheel with semi-circle, small/medium/large circle, fixation star, and slit.
- Includes filter wheel engageable for all apertures with symbol display, red-free filter, blue filter and polarization filter.
- Optimized high-performance optics with aspherical condenser lens.
- Parallel beam path.
- Dust-proof.
- Large selection of power sources: handy and stable handles, practical chargers and well-conceived diagnostic stations

with anti-theft device
XL 3,5 V **No. 10571-301**
LED 3,5 V **No. 10595-301**

ri-scope® L3

The maximized model with additional focussing device and 89 single-step dioptre values.

without anti-theft device
XL 2,5 V **No. 10572**
XL 3,5 V **No. 10573**
LED 3,5 V **No. 10573-203**

- Corrective lenses for 89 dioptre values Plus 1-45 in single steps, Minus 1-44 in single steps.
- Easy-to-operate aperture hand-wheel with semi-circle, small/medium/large circle, fixation star, slit and grid.
- Includes filter wheel engageable for all apertures with symbol display, red-free filter, blue filter and polarization filter.
- Focussing device with zero retention force for the quick correction of ametropias.
- Dust-proof.
- Large selection of power sources: handy and stable handles, practical chargers and well-conceived diagnostic stations.

with anti-theft device
XL 3,5 V **No. 10573-301**
LED 3,5 V **No. 10596-301**

ri-scope® RETINOSCOPIES PRODUCT RANGE

ri-scope® retinoscope (skiascope)

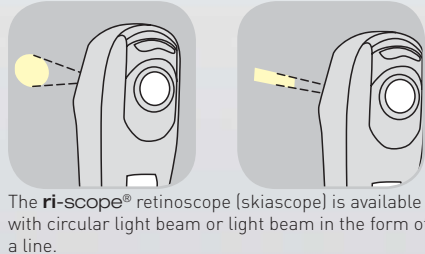
Slit
without anti-theft device
HL 2,5 V **No. 10543**
XL 3,5 V **No. 10544**

with anti-theft device
XL 3,5 V **No. 10544-301**

Spot
without anti-theft device
HL 2,5 V **No. 10545**
XL 3,5 V **No. 10546**

with anti-theft device
XL 3,5 V **No. 10546-301**

- The **ri-scope®** retinoscope (skiascope) measures the refractive power of the eye. Refractive flaws, such as near- and far-sightedness, as well as astigmatism can be detected and diagnosed.
- With XL 3.5-V xenon lamp or HL 2.5-V halogen lamp.
- Two models are available:
 - The spot-light retinoscope projects a circular light beam.
 - The slit-light retinoscope with a light beam in the form of a line, simplifies detection and diagnosis of astigmatic refractive flaws.
- The reflex in the form of a line is moved vertically to the axis across the pupils of the patient with a slight oscillating movement. A shadow moves in the same or opposite direction.
- Co-movement (plus lines): The patient is far-sighted.
- Counter-movement (minus lines): The patient is nearsighted.
- Easy to operate with knurled thumb screw. The line and spot image can be focussed with the controls and turned 360°, angle read-out displayed on the integrated scale.
- Holder for hanging and placement of the fixation card into position for dynamic retinoscopy.
- Delivered with two fixation cards. The patient's eye can adjust optimally to the distance to the retinoscope.
- Integrated eyeglass protection.
- Bayonet fitting for quick and secure attachment to the handle.
- Dust-proof, very sturdy and light casing made of impact-resistant ABS plastic.
- Bulbs can be quickly replaced at the base of the instrument head.
- Large selection of power sources: handy and stable handles, practical chargers and well-conceived diagnostic stations.



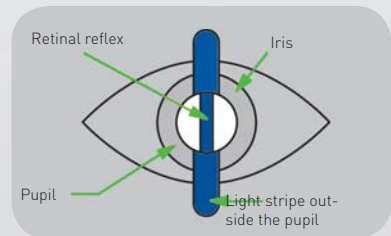
The **ri-scope®** retinoscope (skiascope) is available with circular light beam or light beam in the form of a line.



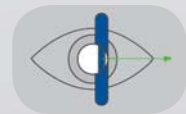
The slit and spot image can be turned 360° with the knurled thumb screw. The respective angle read-out is displayed directly on the scale.



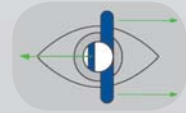
The fixation cards may be placed on the holder and be attached.



Co-movement
Far-sightedness



Counter-movement
Near-sightedness



Line outside the axis
Astigmatism



ri-scope® L
RETINOSCOPE



ri-scope® DERMATOSCOPES PRODUCT RANGE

ri-derma® dermatoscopes

without anti-theft device
 XL 2,5 V **No. 10550**
 XL 3,5 V **No. 10551**
 LED 3,5 V **No. 10577**

with anti-theft device
 XL 3,5 V **No. 10551-301**
 LED 3,5 V **No. 10577-301**

Dermatoscopic oil
 Four 12.5 ml glass vials
No. 10970

Today skin cancer is a commonly occurring disease, which can often be diagnosed and treated at an early stage. The **ri-derma®** dermatoscope offers physicians and specialists a reliable method of dermatoscopic screening and early identification of malignant melanomas. Proven epiluminescence microscopy allows melanocytic and non-melanocytic structures to be distinguished and enables precise observation of changes in skin pigmentation.

- Illumination of the examination field with 3.5-V LED illumination and/or 2.5-V XL xenon illumination resembles natural daylight.
- 10-fold magnification of the structure of the skin with focussing, achromatic lens.
- Two different skin-friendly and sterilizable contact plates are available:
 - with scale from 0 – 10 mm for exact measurement of pigmented skin lesions,
 - without scale.
- Bulbs can be quickly replaced at the base of the instrument head.
- Stable casing of black chrome-plated metal, dustproof.
- Practical eyeglass protection.
- Bayonet fitting for quick and secure attachment of the instrument head to the handle.
- Large selection of power sources: handy and stable handles, practical chargers and well-conceived diagnostic stations.
- Large selection of **ri-derma®** sets at especially attractive prices.
- All of the power sources can be combined with the high-quality **Riester ri-derma®** line.
- Developed and manufactured in Germany.



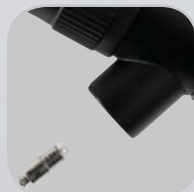
without scaling



with scaling 0 – 10 mm



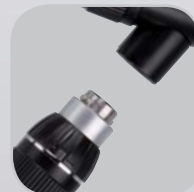
Dermatoscopic oil



The bulb can be quickly replaced at the base of the instrument head.



Focussing device with eyeglass protection.



Bayonet fitting for securely fastening **ri-derma®** to the handle.

ri-scope® L
 DERMATOSCOPES

ri-scope® E.N.T. INSTRUMENTS

Operation otoscope Human

without anti-theft device
HL 2,5 V **No. 10560**
XL 3,5 V **No. 10561**

with anti-theft device
XL 3,5 V **No. 10561-301**

- HL 2.5V halogen or 3.5V XL xenon lamp.
- Swivelling lens with 2.5-fold magnification.
- Adjustable speculum holder can be fixed in any position.
- Open design for unhindered use during examination and operation.
- Bayonet fitting for quick and secure attachment to the handle.
- OP otoscope made of metal and speculum holder made of impact-resistant plastic for long service life.
- Bulbs can be quickly replaced on the front of the otoscope.



Specula for ri-scope® O.P. otoscope

1 pc. 2 mm **No. 10460**
1 pc. 3 mm **No. 10461**
1 pc. 4 mm **No. 10462**
1 pc. 5 mm **No. 10463**

Nasal specula
1 pc. 9 mm **No. 10464**

- Stable and durable plastic specula with metal attachment for repeat use.
- Can be sterilized at 134° C for 10 minutes in steam sterilizer.
- Selection of different sizes: 2 mm, 3 mm, 4 mm, 5 mm and 9 mm.
- The 9-mm speculum is suitable for use as a nasal speculum.
- Each speculum is labelled by size.
- Delivered in a poly bag.



F.O. tongue blade holder

without anti-theft device
XL 2,5 V **No. 10534**
XL 3,5 V **No. 10535**
LED 3,5 V **No. 10574**

with anti-theft device
XL 3,5 V **No. 10535-301**
LED 3,5 V **No. 10574-301**

- With XL 2.5V, XL 3.5V xenon lamps or 3.5V LED
- High-quality fiberoptic lightwave conductor for optimal beaming and transmission of the light. In combination with the lamp this provides cool examination light similar to daylight.
- Slide attachment for fixing and detaching wooden tongue depressors for a firm hold.
- Bayonet fitting for quick and secure attachment to the handle.
- Sturdy, very light casing made of ABS plastic for a long service life.
- Bulbs can be quickly replaced at the base of the instrument head.



ri-scope® L
INSTRUMENT HEADS

F.O. nasal speculum

without anti-theft device

XL 2,5 V **No. 10536**

XL 3,5 V **No. 10537**

LED 3,5 V **No. 10575**

with anti-theft device

XL 3,5 V **No. 10537-301**

LED 3,5 V **No. 10575-301**

- With XL 2,5V or 3,5V xenon lamps or 3.5 V LED
- High-quality fiberoptic lightwave conductor for optimal beaming and transmission of the light. In combination with the lamp this provides cool examination light similar to daylight.
- Swivelling and removable lens with 2.5-fold magnification.
- Slow and controlled expansion of the speculum by turning on the screw adjuster, fast expansion by pressing down on the screw adjuster.
- Bayonet fitting for quick and secure attachment to the handle.
- Impact resistant casing made of glass-fibre reinforced plastic.
- Bulbs can be quickly replaced at the base of the instrument head.



F.O. light conductor

without anti-theft device

XL 2,5 V **No. 10538**

XL 3,5 V **No. 10539**

LED 3,5 V **No. 10576**

with anti-theft device

XL 3,5 V **No. 10539-301**

LED 3,5 V **No. 10576-301**

- With XL 2,5V or 3,5V xenon lamps or 3.5 V LED.
- High-quality fiberoptic lightwave conductor for optimal beaming and transmission of the light. Best illumination of throat and laryngeal areas.
- Bayonet fitting for quick and secure attachment to the handle.
- Chrome-plated metal, durable and sturdy.
- Bulbs can be quickly replaced at the base of the instrument head.



Laryngeal mirrors for F.O. tongue blade holder

1 pair **No. 10447**

- Two laryngeal mirrors No. 3 (Ø 20 mm) and No. 4 (Ø 22 mm) for illumination and mirroring of laryngeal area.
- Easily attached to the light conductor.



ri-scope® LAMPS

Riester LED's, XL xenon and HL halogen lamps bring more light into the diagnosis. They always ensure optimal illumination of the area under examination. The latest technology provides illumination that is similar to daylight.

XL/HL 2,5 V lamps

XL 2,5 V xenon lamp
For **ri-scope®** Otoscope L1
Pack contains 6 units

No.10489



XL 2,5 V xenon lamp
For **ri-scope®** F.O. OtoscopeL2/L3,
Light conductor, nasal speculum and tongue blade
holder. Pack contains 6 units

No.10600



HL 2,5 V halogen lamp
For **ri-scope®** operation otoscope human
Pack contains 6 units

No.10602



XL 2,5 V xenon lamp
For **ri-scope®** ophthalmoscope L1/L2/L3 and
ri-derma®. Pack contains 6 units

No.10605



HL 2,5 V halogen lamp
For **ri-scope®** retinoscope slit lamp
Pack contains 6 units

No.10615



HL 2,5 V halogen lamp
For **ri-scope®** retinoscope spot lamp
Pack contains 6 units

No.10620



XL 3,5V xenon lamps / 3,5V LED

LED 3,5 V

For **ri-scope**[®] ophthalmoscope L1/L2/L3
Pack contains 1 unit

No.10622



LED 3,5 V

For **ri-scope**[®] otoscope L2/L3, **ri-derma**[®],
Light conductor, nasal speculum and tongue blade
holder. Pack contains 6 units
Pack 1 unit

No.10599



No. 12610

XL 3,5 V xenon lamp

For **ri-scope**[®] otoscope L1
Pack contains 6 units

No.10487



XL 3,5 V xenon lamp

For **ri-scope**[®] F.O. otoscope L2/L3,
ri-derma[®], Light conductor, nasal speculum
and tongue blade holder. Pack contains 6 units

No.10607



XL 3,5 V xenon lamp

For **ri-scope**[®] ophthalmoscope L1/L2/L3,
ri-derma[®]. Pack contains 6 units

No.10608



XL 3,5 V xenon lamp

For **ri-scope**[®] operation otoscope human
Pack contains 6 units

No.10609



XL 3,5 V xenon lamp

For **ri-scope**[®] retinoscope slit lamp
Pack contains 6 units

No.10610



XL 3,5 V xenon lamp

For **ri-scope**[®] retinoscope spot lamp
Pack contains 6 units

No.10611



ri-scope® POWER SOURCES

The **Riester ri-scope®** line includes a large selection of high-quality and long-lasting power sources. The 230-V or 120-V instruments shown here are standard versions. If you require other voltages or specialized plugs for your country, we request that you make this information available to us when inquiring or ordering.

Handles

Handy **Riester**-handles with continuously adjustable **rheotronic®** for regulating light intensity are the basis for a safe examination. The well-conceived ergonomically plug and battery handles guarantee comfortable handling.

- Solid metal handles, black chrome-plated.
- Practical bayonet fitting for quickly switching instrument heads.
- Batteries are easy to replace at the base of the handle.
- For 3.5-V and 2.5-V **ri-scope®** and **ri-derma®** instrument heads.

Battery handles Type C

for alkaline battery,
for Li-ion battery
No. 10670

for Li batteries
No. 10630

- Handle diameter: 28 mm.
- Easy to charge in the **ri-charger®L** base.
- With **rheotronic®**
- Without batteries

Batteries

Alkaline battery Type C (2 pieces)	No. 10686	2,5 V
Li battery (2 pieces)	No. 11287	3,5 V
Li-ion battery ri-accu® L	No. 10691	3,5 V



Battery handles Type AA

for alkaline battery,
for Li-ion battery
No. 10642

for Li batteries
No. 10643

- Handle diameter: 19 mm.
- Easy to charge in the **ri-charger®L** base.
- With **rheotronic®**
- Without batterie

Batteries

Alkaline battery Type C (4 pieces)	No. 10685	2,5 V
Li battery (2 pieces)	No. 11287	3,5 V
Li-ion battery ri-accu® L	No. 10690	3,5 V



ri-scope® L
HANDLES

3,5 + 2,5 V / 230 V
No. 10638

Plug handles

For **ri-accu**[®] L rechargeable battery.

3,5 + 2,5 V / 120 V
No. 10639

- Handle diameter: 28mm.
- Easy to charge by plugging in.
- With rheotronic[®].

Batteries

Li-ion battery **ri-accu**[®] L

No. 10692

3,5 V



mit rheotronic[®]
2,5 V / 230 V
No. 10666

Combi handles

With rechargeable NiMH battery **ri-accu**[®] for plug-in handle casing

2,5 V / 120 V
No. 10667

- Plug-in handle casing for one rechargeable NiMH battery **ri-accu**[®] (No. 10683, 2.5 V), alternative handle casing for a rechargeable NiMH battery **ri-accu**[®] (No. 10681, 2.5 V) or for two Type C batteries.
- By simply switching the plug-in casing with the alternative handle casing the plug-in handle converts to a battery handle – quickly and cost-effectively. There is no need to place an adapter in between!
- Handle diameter: 28 mm.
- Easy to recharge in **ri-charger**[®] charging base or by plugging it into the socket.
- The combi-handle can not be combined with parts for Type C battery handles or plug-in handles.
- With rheotronic[®]

Batteries

NiMH Battery **ri-accu**[®] for plug handles

NiMH Battery **ri-accu**[®] handle type C

Alkaline battery Type C (2 pieces)

No. 10683

2,5 V

No. 10681

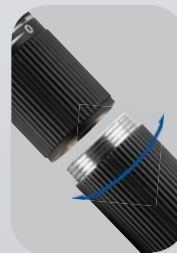
2,5 V

No. 10686

2,5 V



The Combi-handle combines three functions!
It is always ready for use even when electricity
is not permanently available from the socket!



Thanks to the screw thread the Combi-handle can
be converted quite simply from a plugin into a bat-
tery handle. There is no need to place an adapter
in between!

ri-scope[®] L
HANDLES

CHARGING BASES

ri-charger®L is the perfect charging base for all rechargeable handles, Type C/AA.

- Table or wall model
- Practical storage container for two replacement lamps and ear specula.
- Charging status displayed on the device:
Yellow: charging in progress.
Green: charging completed.

No. 10705

230 V

ri-charger®L

No. 10706

120 V

complete, with wall holder

- for all rechargeable handles with Li-Ion batteries 3,5V



ri-former®

MODULAR WALL DIAGNOSTIC STATION

ri-former® LED – modular wall station for E.N.T. Instruments, ophthalmic instruments, dermatoscope, sphygmomanometer and thermometer. The basic module is available with one handle for one instruments and can be supplemented with up to 4 more handle modules, and a sphygmomanometers and a thermometer. With its centralized power supply and LED illumination, **ri-former® LED** practically is maintenance-free.

- 3 years warranty for LED version, including LEDs
- Maintenance-free, including LEDs
- White, bright and even cool LED illumination
- Optionally available with 3,5V Xenon illumination
- The handles automatically switch on or off when removing or replacing them in the handle unit
- **rhoelectronic®** – electronic light intensity adjustment for LEDs and light bulbs and automatic safety shut-down after 120 seconds
- Spiral cord stretches up to 3 m.
- Modular system from 1 instrument up to a maximum of 5 instruments and sphygmomanometers and thermometer in addition
- Constant output voltage prolongs service life of LEDs and bulbs and always provides consistent illumination
- Easy surface cleaning and disinfection possible

Wall station with 1 or 2 handles. Further handles may be added by extension modules, see page 21.

ri-former®
WALL DIAGNOSTIC STATION

ri-former® 1 handle with clock
 3,5 V / 230 V **No. 3650**
 3,5 V / 120 V **No. 3651**

without clock

3,5 V / 230 V **No. 3652**
 3,5 V / 120 V **No. 3653**

ri-former® 2 handles with clock

3,5 V / 230 V **No. 3650-300**
 3,5 V / 120 V **No. 3651-300**

without clock

3,5 V / 230 V **No. 3652-300**
 3,5 V / 120 V **No. 3653-300**

- Without instrument heads.
- Complete with wall mounting plate, plugs, screws, and assembly plan.



ri-former® EXTENSION MODULES

1 handle **No. 300**

Extension module, 1 handle

- Automatic switch-on/off of handles when removing or replacing them in the handle unit.
- Ergonomic and non-slip.
- **rheotronic®**: infinitely variable regulation of brightness as well as manual switching on/off possible on the handle.
- Spiral cord expandable up to 3 m.
- For expanding the **ri-former®** base module, up to 4 handle modules possible.
- Complete with wall mounting plate, plugs, screws, and assembly plan.



Bandage cuff adult
No. 3655-103

Hook cuff adult
No. 3655-106

Velcro cuff adult
No. 3655-109

Velcro cuff large adult
No. 3655-123

Velcro cuff children
No. 3655-130

Extension module big ben®

- Generously dimensioned scale with 145.5 mm long sides and high-contrast scale layout guarantees optimum readability.
- With extra sturdy wall mounting made of glass-fibre reinforced plastic and extraordinary sturdy casing.
- Maximum error tolerance: +/- 3 mm Hg.
- Also available as latex-free version (when ordering please indicate LF for "latex-free" before the article number).
- Supplied with spacious basket for storage of tubes and cuffs, as well as wall mounting plate, plugs and screws.
- Individual basket assembly possible thanks to expandable spiral cord.



ri-former®
EXTENSION MODULES

without anti-theft device

No. 3656

with anti-theft device

No. 3656-301



Infrared thermometer ri-thermo® N

- Precise measurement of the body temperature in the ear. Clinical validation.
- Measurement takes approx. 1-2 seconds.
- Digital display for optimum readability of the measurement values in °C or in °F.
- Memory function for 12 measurements.
- Probe covers: A new probe cover should be used for every measurement in the ear for reasons of hygiene and accuracy. No measurement should be made without a probe cover!
- Two alkaline manganese batteries type AA 1.5 V included for approx. 1,000 measurements.
- Supplied with 40 probe covers in attractive sales packaging.

ri-spec ear specula dispenser

No. 3654



- Specula dispenser with 5 tubes for up to 5 specula sizes.
- Hygienic and practical solution, dispenses a new speculum for each examination.
- Simple to clean and disinfect.
- Easy to refill and can be closed with a cover.
- Filling level of specula tubes can be seen.
- Suitable for all **Riester** specula – except **uni®** / **ecomom®** with metal attachment.
- Can also be used independent of the diagnostic station.
- Complete with plugs and screws.

Disposable specula

- Selection of different sizes
- For **ri-former®** specula dispenser, otoscopes ri-scope® L1/L2/L3
- Made of black plastic.
- For single use.
- An especially hygienic option for the prevention of cross-contamination



Disposable specula for ri-scope® L1/L2/L3 in sizes of 2/2,5 mm and 4 mm

No. 14065-531

No. 14065-534

No. 14066-532

No. 14066-534

2,5 mm specula L1/L2, Packed in sleeves of 25 pcs, 1 box 40 sleeves = 1000 pcs.

4 mm specula L1/L2, Packed in sleeves of 25 pcs, 1 box 40 sleeves = 1000 pcs.

2 mm specula L3, Packed in sleeves of 25 pcs, 1 box 40 sleeves = 1.000 pcs.

4 mm specula L3, Packed in sleeves of 25 pcs, 1 box 40 sleeves = 1.000 pcs.

Wall mounting board out of Plexiglas for ri-former®

No. 12713

No. 12712

No. 12715

Plexiglas wall board **ri-former®** small size, 480x295 mm

Plexiglas wall board **ri-former®** medium size, 680x405 mm

Plexiglas wall board **ri-former®** large size, 780x405 mm

ri-scope® SETS

LED
inside

Instrument sets for E.N.T., ophthalmoscopy/retinoscopy and dermatology. The basic sets are delivered without batteries, **ri-accu®L** and **ri-charger®L**. These accessories are shown under each respective art. no. and must be ordered separately. Due to the variety of possible instrument combinations, we show only a portion of all the instrument options in set form. We are happy to provide information on individualized product combinations upon request

- 2.5 V instruments are equipped with xenon lamps and 3.5 V instruments are equipped with XL xenon lamps or LEDs.
- All sets are supplied in a deluxe hard case with safety catches.
- Easy replacement of instrument heads thanks to bayonet fitting.

ri-scope® L otoscope

- Tubes with 4 black, reusable ear specula sizes 2 - 5 mm and each with 3 black 2.5-mm (L1/L2) or 2-mm (L3) and 4-mm disposable ear specula.
- Operation lens with 4-fold magnification included only in L3.
- Deluxe hard case with safety catch.
- One spare lamp.



Battery handle, Type AA with rheotronic®

For 2 alkaline batteries
Type AA

No. 3705 L1 XL 2.5 V

No. 3706 L2 XL 2.5 V

For 2 Li batteries

No. 3707 L1 XL 3.5 V

No. 3708 L2 LED 3.5 V

No. 3709 L3 LED 3.5 V

For **ri-accu® L**

No. 3707-550 L1 XL 3.5 V

No. 3708-550 L2 LED 3.5 V

No. 3709-550 L3 LED 3.5 V

Battery handle, Type C with rheotronic®

For 2 alkaline batteries
Type C

No. 3700 L1 XL 2.5 V

No. 3716 L2 XL 2.5 V

No. 3701 L3 XL 2.5 V

For 2 Li batteries

No. 3702 L1 XL 3.5 V

No. 3703 L2 LED 3.5 V

No. 3704 L3 LED 3.5 V

For **ri-accu® L**

No. 3702-550 L1 XL 3.5 V

No. 3703-550 L2 LED 3.5 V

No. 3704-550 L3 LED 3.5 V

Plug-in handle with rheotronic®

For **ri-accu®L**

No. 3710

L1 XL 3.5 V / 230 V

No. 3711

L1 XL 3.5 V / 120 V

No. 3712

L2 LED 3.5 V / 230 V

No. 3713

L2 LED 3.5 V / 120 V

No. 3714

L3 LED 3.5 V / 230 V

No. 3715

L3 LED 3.5 V / 120 V

ri-scope® L
SETS



ri-scope® L Ophthalmoscopes

- Deluxe hard case with safety catch.
- Separate magnifying glass with 5-fold magnification.
- One spare lamp.

Battery handle, Type AA with rheotronic®

For 2 alkaline batteries
Type AA

No. 3727 L1 XL 2.5 V

For 2 Li batteries

No. 3728 L1 XL 3.5 V

No. 3729-203 L2 LED 3.5 V

No. 3730-203 L3 LED 3.5 V

For **ri-accu®** L

No. 3728-550 L1 XL 3.5 V

No. 3814-203 L2 LED 3.5 V

No. 3815-203 L3 LED 3.5 V

Battery handle, Type C with rheotronic®

For 2 alkaline batteries
Type C

No. 3722 L1 XL 2.5 V

No. 3723 L2 XL 2.5 V

For 2 Li batteries

No. 3724 L1 XL 3.5 V

No. 3725-203 L2 LED 3.5 V

No. 3726-203 L3 LED 3.5 V

For **ri-accu®** L

No. 3724-550 L1 XL 3.5 V

No. 3811-203 L2 LED 3.5 V

No. 3812-203 L3 LED 3.5 V

Plug-in handle with rheotronic®

For **ri-accu®** L

No. 3731

L1 XL 3.5 V / 230 V

No. 3732

L1 XL 3.5 V / 120 V

No. 3733-203

L2 LED 3.5 V / 230 V

No. 3734-203

L2 LED 3.5 V / 120 V

No. 3735-203

L3 LED 3.5 V / 230 V

No. 3736-203

L3 LED 3.5 V / 120 V

ri-scope® L otoscope/ophthalmoscope

- Tubes with 4 black, re-usable ear specula sizes 2 - 5 mm and each with 3 black 2.5-mm (L1/L2) or 2-mm (L3) and 4-mm disposable ear specula.
- Operation lens with 4-fold magnification available only with L3.
- Deluxe hard case with safety catch.
- Two spare lamps.



Battery handle, Type AA with rheotronic®

For 2 alkaline batteries
Type AA

No. 3747

L2 Oto./L1 Oph. XL 2.5 V

For 2 Li batteries

No. 3748-203

L2 Oto./L1 Oph. LED 3.5 V

For **ri-accu®** L

No. 3818-203

L2 Oto./L1 Oph. LED 3.5 V

Battery handle, Type C with rheotronic®

For 2 alkaline batteries
Type C

No. 3743

L1 XL 2.5 V

No. 3745

L3 Oto./L2 Oph. XL 2.5 V

For 2 Li batteries

No. 3744-203

L1 Oto. XL/L1 Oph. LED 3.5 V

No. 3746-203

L3 Oto./L2 Oph. LED 3.5 V

For **ri-accu®** L

No. 3744-550

L1 XL 3.5 V

No. 3817-203

L3 Oto./L2 Oph. LED 3.5 V

Plug-in handle with rheotronic®

For **ri-accu®** L

No. 3749-203

L3 Oto./L2 Oph.

LED 3.5 V / 230 V

No. 3750-203

L3 Oto./L2 Oph.

LED 3.5 V / 120 V

ri-scope® L

SETS

ri-scope® E.N.T.

ri-scope® F.O. otoscope, nasal speculum and F.O. tongue blade holder

- Replacement bulb for **ri-scope®** F.O. otoscope, F.O. nasal speculum and F.O. tongue blade holder
- Tubes with 4 black, re-usable ear specula sizes 2 - 5 mm and each with 3 black 2.5-mm (L1/L2) or 2-mm (L3) and 4-mm disposable ear specula.
- Operation lens with 4-fold magnification included only with L3.
- Deluxe hard case with safety catch.
- One spare lamp.



Battery handle, Type C with rheotronic®

For 2 alkaline batteries Type C

No. 3759 L3 XL 2.5 V

For 2 Li batteries

No. 3760 L3 LED 2.5 V

For **ri-accu®** L

No. 3760-550 L3 XL 2.5 V

Plug-in handle with rheotronic®

For **ri-accu®** L

No. 3761 L3 LED 3.5 V / 230 V

No. 3762 L3 LED 3.5 V / 120 V

ri-scope® praktikant

ri-scope® F.O. otoscope, F.O. nasal speculum, F.O. tongue blade holder and F.O. bent-arm illuminator

- Tubes with 4 black, re-usable ear specula sizes 2 - 5 mm and each with 3 black 2.5-mm (L1/L2) or 2-mm (L3) and 4-mm disposable ear specula.
- Operation lens with 4-fold magnification included only with L3.
- Two laryngeal mirrors No. 3 and No. 4.
- Deluxe hard case with safety catch.
- One spare lamp.



Battery handle, Type C with rheotronic®

For 2 alkaline batteries Type C

No. 3765 L3 XL 2.5 V

For 2 Li batteries

No. 3766 L3 LED 3.5 V

For **ri-accu®** L

No. 3766-550 L3 LED 3.5 V

Plug-in handle with rheotronic®

For **ri-accu®** L

No. 3767 L3 LED 3.5 V / 230 V

No. 3768 L3 LED 3.5 V / 120 V

ri-scope® L
SETS

ri-scope® perfect

ri-scope® F.O. otoscope, ophthalmoscope and F.O. tongue blade holder

- Replacement bulb for ri-scope® F.O. otoscope, F.O. tongue blade holder.
- Replacement bulb for ri-scope® ophthalmoscope.
- Tubes with 4 black, re-usable ear specula sizes 2 - 5 mm and each with 3 black 2.5-mm (L1/L2) or 2-mm (L3) and 4-mm disposable ear specula.
- Operation lens with 4-fold magnification included only with L3.
- Deluxe hard case with safety catch.
- Two spare lamps.



Battery handle, Type C with rheotronic®

For 2 alkaline batteries Type C

No. 3753 L3 Oto./L2 Oph. XL 2.5 V

For 2 Li batteries

No. 3754-203 L3 Oto./L2 Oph. LED 3.5 V

For ri-accu® L

No. 3819-203 L3 Oto./L2 Oph. LED 3.5 V

Plug-in handle with rheotronic®

For ri-accu® L

No. 3755-203

L3 Oto./L2 Oph. LED 3.5 V / 230 V

No. 3756-203

L3 Oto./L2 Oph. LED 3.5 V / 120 V

ri-scope® de luxe

ri-scope® F.O. otoscope, ophthalmoscope, F.O. nasal speculum, F.O. tongue blade holder and F.O. bent-arm illuminator

- Tubes with 4 black, re-usable ear specula sizes 2 - 5 mm and each with 3 black 2.5-mm (L1/L2) or 2-mm (L3) and 4-mm disposable ear specula.
- Two laryngeal mirrors No. 3 and No. 4.
- Deluxe hard case with safety catch.
- Two spare lamps.



Battery handle, Type C with rheotronic®

For 2 alkaline batteries Type C

No. 3771 L3 Oto./L2 Oph. XL 2.5 V

For 2 Li batteries

No. 3772-203 L3 Oto./L2 Oph. LED 3.5 V

For ri-accu® L

No. 3820-203 L3 Oto./L2 Oph. LED 3.5 V

Plug-in handle with rheotronic®

For ri-accu® L

No. 3773-203

L3 Oto./L2 Oph. LED 3.5 V / 230 V

No. 3774-203

L3 Oto./L2 Oph. LED 3.5 V / 120 V

ri-scope® L

SETS

ri-scope® slit/spot retinoscope

- Two fixation cards for dynamic retinoscopy.
- Deluxe hard case with safety catch.
- One spare lamp.



Battery handle, Type C with rheotronic®

For 2 alkaline batteries Type C

No. 3410 Slit HL 2.5 V

No. 3430 Spot HL 2.5 V

For 2 Li batteries

No. 3782 Slit XL 3.5 V

No. 3787 Spot XL 3.5 V

For ri-accu® L

No. 3782-550 Slit XL 3.5 V

No. 3787-550 Spot XL 3.5 V

Plug-in handle with rheotronic®

For ri-accu® L

No. 3783 Slit L3 XL 3.5 V / 230 V

No. 3784 Slit L3 XL 3.5 V / 120 V

No. 3788 Spot L3 XL 3.5 V / 230 V

No. 3789 Spot L3 XL 3.5 V / 120 V

ri-vision® with slit retinoscope

ri-scope® Retinoscope with slit lamp and ophthalmoscope L2

- Two fixation cards for dynamic retinoscopy.
- Two spare lamps.



Battery handle, Type C with rheotronic®

For 2 alkaline batteries Type C

No. 3792 HL / XL 2.5 V

For 2 Li batteries

No. 3794 XL 3.5 V

For ri-accu® L

No. 3794-550 XL 3.5 V

Plug-in handle with rheotronic®

For ri-accu® L

No. 3795 XL 3.5 V / 230 V

No. 3796 XL 3.5 V / 120 V

ri-scope® L
SETS

ri-vision® with spot retinoscope

ri-scope® Retinoscope with spot lamp and ophthalmoscope L2

- Two fixation cards for dynamic retinoscopy.
- Two spare lamps.



Battery handle, Type C with rheotronic®

For 2 alkaline batteries Type C

No. 3799 HL/XL 2.5 V

For 2 Li batteries

No. 3801 XL 3.5 V

For **ri-accu®** L

No. 3801-550 XL 3.5 V

Plug-in handle with rheotronic®

For **ri-accu®** L

No. 3802 XL 3.5 V, 230 V

No. 3803 XL 3.5 V, 120 V

ri-derma®

- Two sterilizable contact plates, with and without scaling.
- Deluxe hard case with safety catch.
- One spare lamp.



Battery handle, Type C with rheotronic®

For 2 alkaline batteries Type C

No. 3390 XL 2.5 V

For 2 Li batteries

No. 3777 LED 3.5 V

For **ri-accu®** L

No. 3777-550 LED 3.5 V

Plug-in handle with rheotronic®

For **ri-accu®** L

No. 3778 LED 3.5 V / 230 V

No. 3779 LED 3.5 V / 120 V